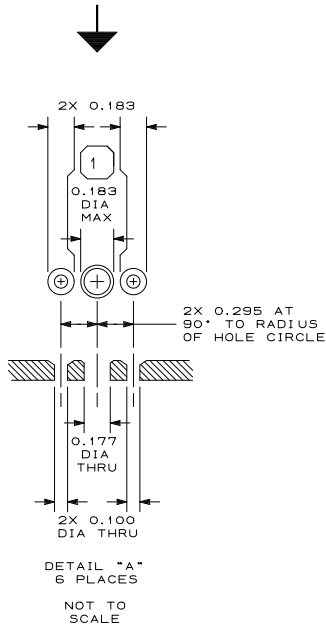


REVISION STATUS				REVISION HISTORY			
DI	PAGE	ZONE	REV.	DESCRIPTION	DATE	CHK	ISSUED
				INITIAL RELEASE			

NOTES: UNLESS OTHERWISE SPECIFIED

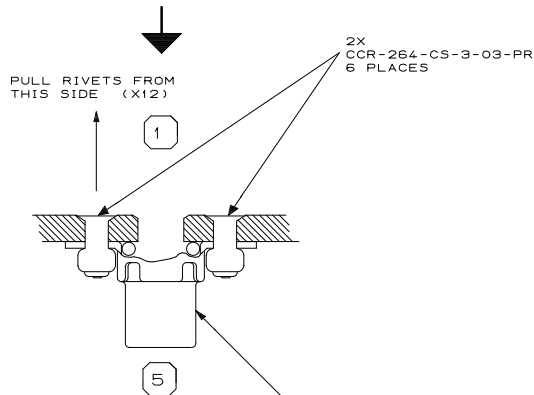
- 1 COUNTERSINK NEAR SIDE (PLAN VIEW) 100° TO DIAMETERS SHOWN.
- 2 CUT MINIMUM-WIDTH KERF SLIT ON ANGLE. APPROXIMATELY AS SHOWN. SLITS TO REMAIN CLEAR OF CAPTIVE NUT OUTLINES (ON FAR SIDE).
3. BREAK AND DE-BURR ALL EDGES AND VERTICES. CLEAN ALL METAL DEBRIS OFF THE PLATE BEFORE PROCEEDING.
4. CLEAN AND ALODYNE ALUMINUM PARTS.
- 5 RIVET SEALED CAPTIVE TANK NUTS TO FAR SIDE (PLAN VIEW). INTEGRAL NUT GASKET SHALL SIT FLAT ON THE UNCHAMFERED SIDE OF THE ALUMINUM PLATE AFTER RIVETING IS COMPLETE. RIVET HEADS SHALL NOT SIT PROUD OF THE METAL SFC. SEE DETAIL "B".
6. MATERIAL LIST:
(PER PLATE)
QTY 01 ALUMINUM ALLOY, 6061-T6 0.125" THICK (NOMINAL)
QTY 06 NAS1474A08
QTY 12 CCR-264-CS-3-03-PR (CHERRY)
7. MAXIMUM WEIGHT: 2.50 OZ. (TOTAL, 2 FINISHED HALVES)

VIEW FROM PLAN SIDE



DETAIL "A"
6 PLACES
NOT TO SCALE

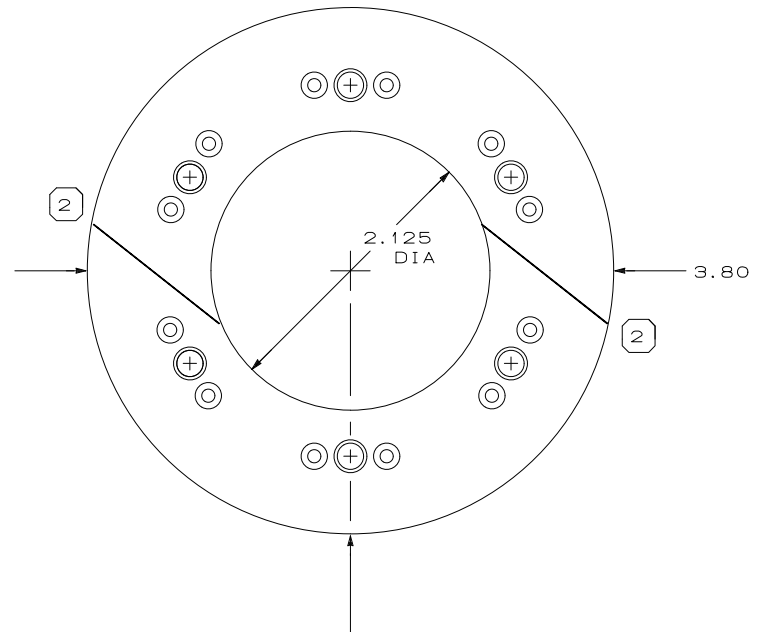
VIEW FROM PLAN SIDE



DETAIL "B"
6 PLACES
NOT TO SCALE

NAS1474A08
6 PLACES
FAR SIDE OF
PLAN VIEW

PLAN VIEW
NEAR-SIDE
VISIBLE



6 x DETAIL "A" ON
2.830 HOLE CIRCLE
6 x 60° APART

FABRICATION DETAIL

UNLESS OTHERWISE SPECIFIED				AIRCRAFT S/N		TITLE	
TOLERANCES				108-2252		FUEL TANK BACKING PLATE, STINSON 108	
.XX	.XXX	.XXXX	ANGLES	DRWN	E SCHLIEPER	10/04/08	SIZE
± 0.100	± 0.002	± 0.001	± 0.10°	CHECKED			D
ALL DIMENSIONS APPLY AFTER FINISHING				ELEC ENG			REGISTRATION
ALL DIMENSIONS IN INCHES				MECH ENG			CF-SJQ
DIMENSIONING AND TOLERANCING PER ANSI Y14.5M - 1992				Q A			FD-108-01
THIS DOCUMENT CONTAINS PROPRIETARY INFORMATION FOR STINSON 108-2 SERIAL NUMBER 2252 AND MAY NOT, IN WHOLE OR IN PART, BE REPRODUCED, DISCLOSED OR USED FOR THE MANUFACTURE OF ANY PART DISCLOSED HEREIN WITHOUT THE PRIOR WRITTEN PERMISSION OF THE AIRCRAFT OWNER. DO NOT SCALE DRAWING THIS STATEMENT APPLIES TO ANY AND ALL PAGES OF THIS DOCUMENT.				APPROVED			DRAWING NUMBER
				PROG MGR			SCALE
				ISSUED			REVISION
							SHEET 01 OF 01

FD-108-01-01/01